

Reveal

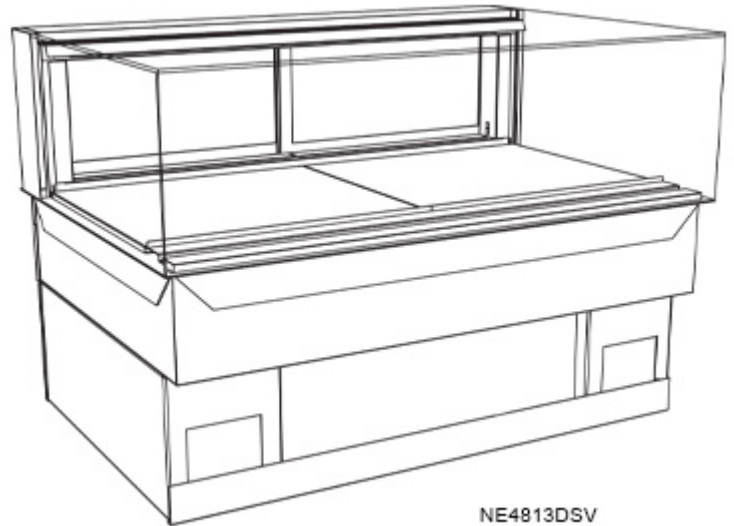
Non-Refrigerated Service Slide In Counter Case

Structural Concepts®

- **NE3613DSV** 35-3/4"L x 33"D x 13-5/8"H
- **NE4813DSV** 47-3/4"L x 33"D x 13-5/8"H

Included

- NOTE: Glass warranty only applicable to first point of delivery
- LED top light
- NOTE: Overall case height is 32-7/8" (includes below counter)
- One piece formed ABS plastic tub
- One year parts & labor warranty
- Slide in base
- Vertical, fixed front & side UV bonded frameless glass



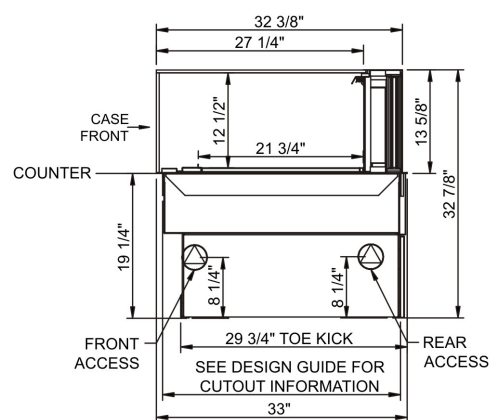
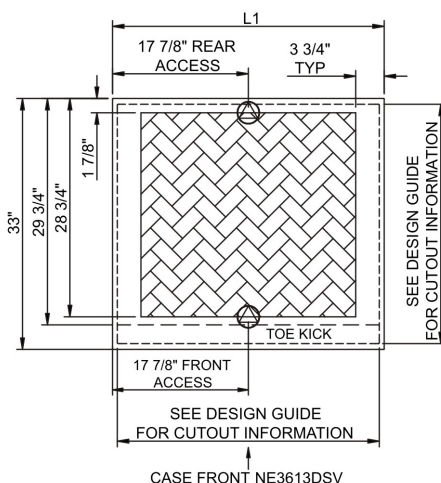
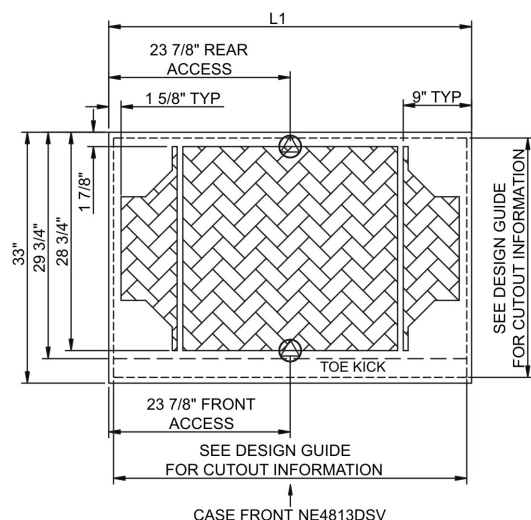
| Specify | Standard Features | Additional Options |
|------------------------------|----------------------------------|--|
| FRAME EXTERIOR COLOR | • Black | <ul style="list-style-type: none"> • Painted (non-stock colors, specify RAL#) • Painted (stock colors, specify RAL#) • Stainless steel |
| INTERIOR COLOR | • Black | <ul style="list-style-type: none"> • NOTE: Interior color must be FDA & NSF approved • Painted (stock colors, specify RAL#) • Stainless steel |
| LEFT END GLASS | • Glass end | • No end glass |
| RIGHT END GLASS | • Glass end | • No end glass |
| UPPER REAR | • Clear glass rear sliding doors | • Reflective glass rear sliding doors |
| LIGHTS | • LED 3500K w/ frosted lens | <ul style="list-style-type: none"> • LED 3000K w/ frosted lens • LED 4000K w/ frosted lens |
| ELECTRICAL CONNECT | • 6' Straight blade power cord | <ul style="list-style-type: none"> • 6' Locking blade power cord • Electrical leads (non-refrigerated) |
| REAR NON-VENTED PANEL | • None | <ul style="list-style-type: none"> • Note: Same as Rear Vented Panel without vents • Painted (non-stock colors, specify RAL#) • Painted (stock colors, specify RAL#) • Stainless steel |
| MISCELLANEOUS | | <ul style="list-style-type: none"> • Rear door lock • Second year parts & labor warranty |

Intended Environment: Type I - Designed to operate in ambient conditions of 75°F with 55% relative humidity unless noted otherwise in system information below.

| Zone | Intended Product To Be Displayed | Warmest Avg Prod Temp ° F |
|------|--------------------------------------|---------------------------|
| 1 | Unpackaged non-refrigerated products | Ambient |

PLAN VIEW

SIDE VIEW



NOTE: ALL DIMENSIONS APPROXIMATE

- ELECTRICAL JUNCTION BOX (SUPPLIED WITH 6\"/>
- LOCATION OF DRAIN TUBE FOR REMOTE REF. ONLY (SUPPLIED WITH 3/4\"/>

- REFRIGERATION LINE CONNECTION.
- REMOTE FLOOR SINK & UTILITIES ACCESS AREA.

- SELF-CONTAINED CASE SERVICE ACCESS AREA.
- DRY CASE SERVICE ACCESS AREA.

| Model Technical Specifications | | | | | | | | | | | | | | | | |
|--------------------------------|-----|-------|-----|----------------------|------------|---------|-----|------|----------|-------|-------|-----------------|-----|-----------------|-----------------|--------|
| Model | L" | L1" | L2" | System Circuit Volts | | | Phs | Freq | Amps *** | Watts | Wires | NEMA Plug | SST | Conv. Rack BTUH | Para. Rack BTUH | Est Wt |
| NE3613DSV | N/A | 35.75 | .00 | Ambient/Lights (N/A) | Circuit #1 | 110-120 | 1 | 60 | 0.70 | 4 | 2+G | 5-15P or L5-15P | N/A | N/A | N/A | 600 |
| NE4813DSV | N/A | 47.75 | .00 | Ambient/Lights (N/A) | Circuit #1 | 110-120 | 1 | 60 | 0.70 | 6 | 2+G | 5-15P or L5-15P | N/A | N/A | N/A | 700 |

*** Does not include electric defrost on freezer models.

Regulatory Approvals:

All Models ETL Listed to UL 65
ETL Sanitation to NSF/ANSI 2



Important Notes:

- ELECTRICAL NOTE: If GFCI is required, a GFCI breaker MUST be used in lieu of a GFCI receptacle.
- 19.25" minimum space required beneath counter surface.
- Glass warranty only applicable to first point of delivery.

⚠ WARNING: This product can expose you to chemicals, including Urethane (Ethyl Carbamate), which are known to the State of California to cause cancer and birth defects or other reproductive harm. For more information go to www.P65Warnings.ca.gov.

Note: Information is subject to change at any time. Visit www.structuralconcepts.com for the most current specs.

21869120

Revised 1-13-2022